

FELLOWSHIPS

“Welcome to Fellowships Advising”





OVERVIEW

What is a fellowship?

Why would you apply?

Fellowships FASA advises on

Spotlight: Domestic Fellowships

- examples

Spotlight: International Fellowships

- examples

How to plan

- Freshman & Sophomores
- Juniors
- Seniors
- some graduate students

Applications

Resources



WHAT IS A FELLOWSHIP?

A fellowship or scholarship provides a recipient with funds to support academic study or research. Some fellowships also provide funds for living expenses, books, and travel related to the fellow's area of academic interest.

- Awarded at undergraduate, graduate, post-graduate, and professional levels
- Some support study in the U.S.; others fund international study
- Awards range from a few thousand dollars to full tuition + stipend

WHY SHOULD YOU APPLY?



Many fellowships provide more ample funds for study than traditional grants awarded to beginning graduate students.

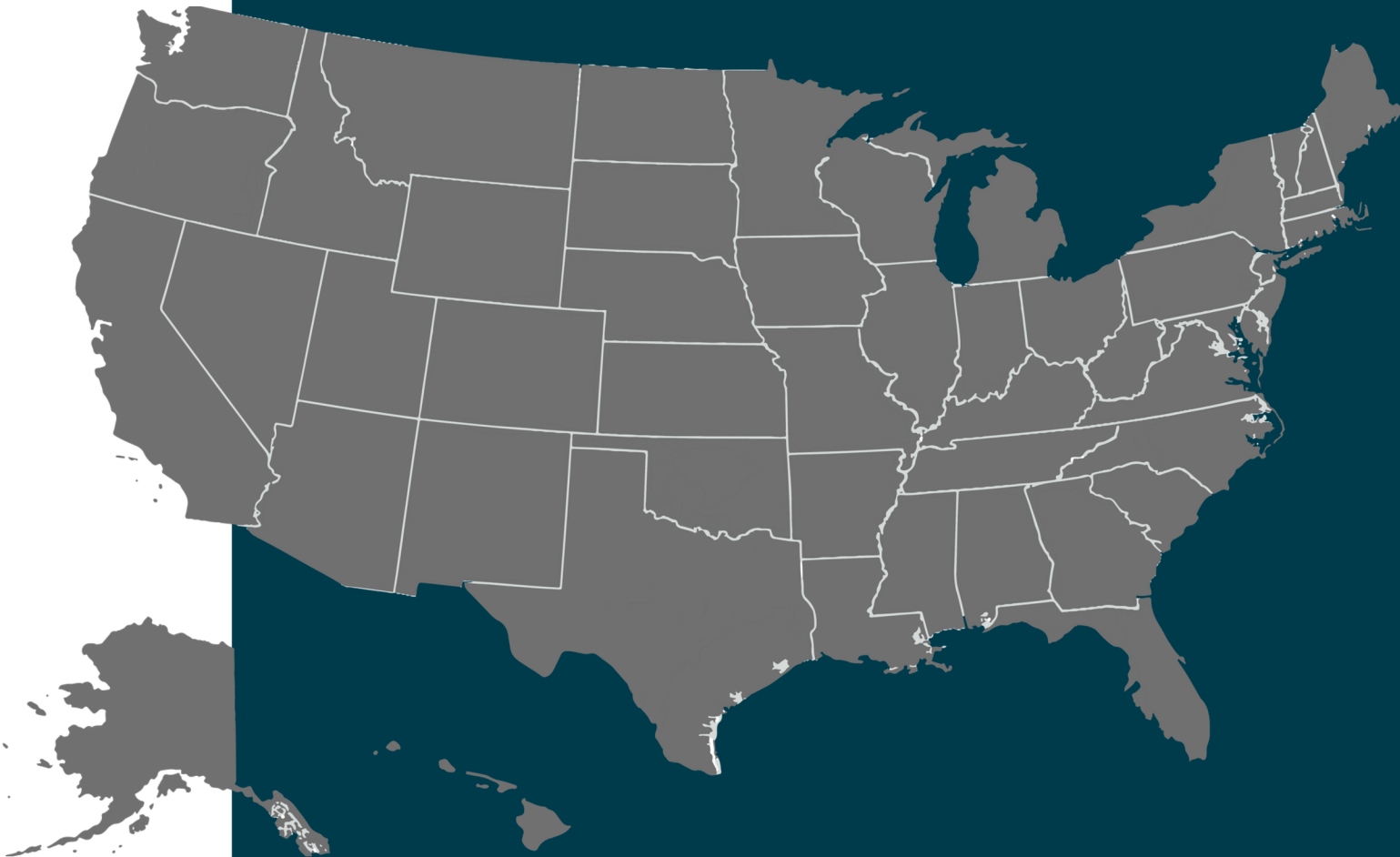
The opportunity to go abroad for one or two years to study and do research can enlarge your knowledge of how science or engineering is "done" elsewhere, allow you to make international contacts that can last a lifetime, and teach you how scientists and engineers are viewed in another culture

Bonus: Applying for a fellowship jump-starts your graduate school application process — essays and recommendation letters overlap significantly.

TYPES OF FELLOWSHIPS ON OUR SITE

- 
- Graduate Fellowships in the U.S. (NSF GRFP, NDSEG, Hertz, Ford Foundation, etc.)
 - Graduate Fellowships Abroad (Rhodes, Marshall, Churchill, Fulbright, Watson, etc.)
 - Public Policy & Public Service Fellowships
 - Science Teaching Fellowships
 - Fellowships for International Students
 - Caltech-specific awards (Bishop Fellowship, SanPietro Travel Prize)
 - Independent Exploration Fellowship - Watson

SPOTLIGHT: FELLOWSHIPS FOR U.S. STUDY



A FEW NOTABLE EXAMPLES FROM THE SITE:



Fellowship	Focus	Benefit
NSF GRFP	Any STEM field	Tuition + \$37K/yr stipend
NDSEG (DoD)	Science & engineering	Full tuition + \$3,200/mo
Hertz	Applied physical sciences	Up to 5 years funding
Ford Foundation	Underrepresented scholars	\$24,000/yr stipend

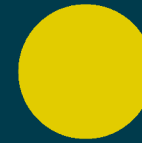




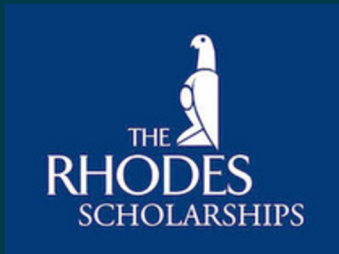
SPOTLIGHT: FELLOWSHIPS INTERNATIONAL



A FEW NOTABLE EXAMPLES FROM THE SITE:



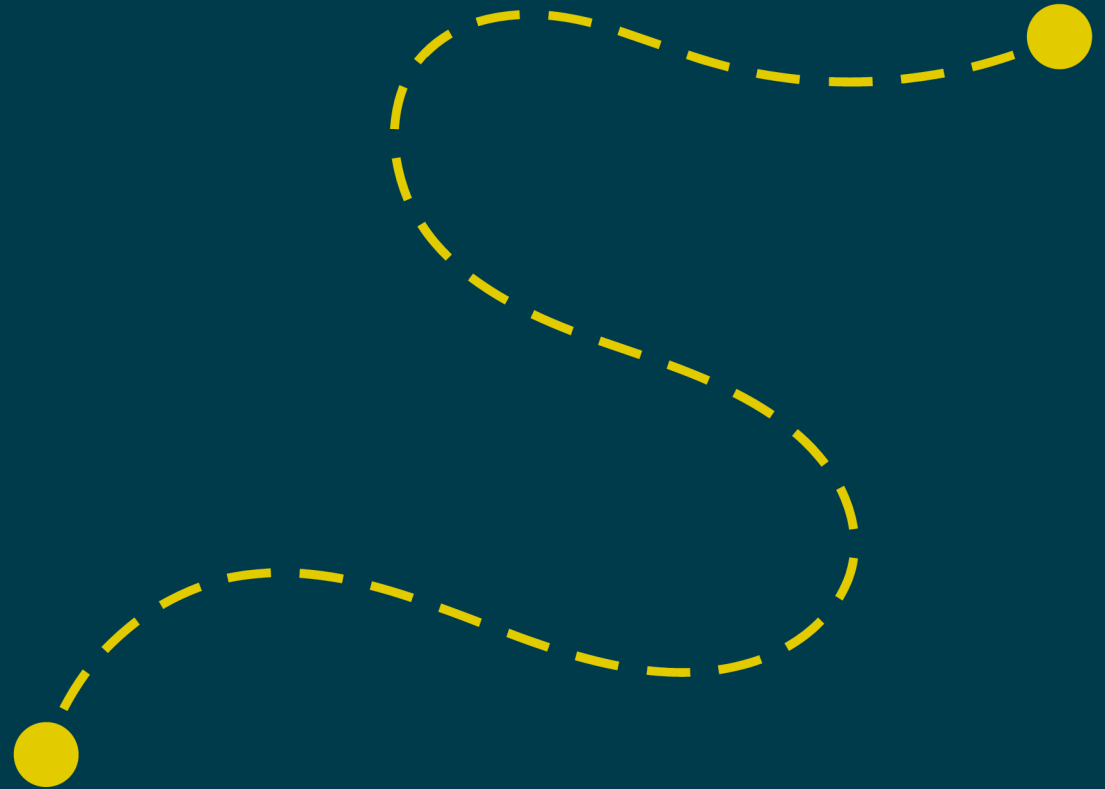
Fellowship	Location	Duration
Rhodes	Oxford, UK	2 years
Churchill	Cambridge, UK	1 year
Watson	Worldwide	1 year
Fulbright	Worldwide	Varies



These require campus nominations.



HOW TO PLAN AHEAD



FRESHMEN / SOPHOMORES



-
- Explore the FASA website;
 - understand what fellowships exist.
 - The Bishop Fellowship and
 - SanPietro Travel Prize — both are open to underclassmen and are great first opportunities.

JUNIORS



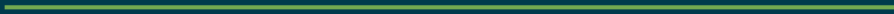
Identify 2–3 target fellowships; begin building your research profile and faculty relationships; consider applying for the Bishop Fellowship or SanPietro Travel Prize

JUNIOR --> SENIOR SUMMER



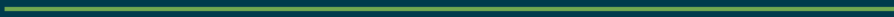
Meet with FASA before the end of summer — it takes several weeks to adequately research study options, write high-quality application essays, and secure references.

SENIOR



Submit applications — most major deadlines fall in October/November

G1 OR G2



Some fellowships are open for current graduate student applications, federal and private.

FOR ALL



Discuss fellowship opportunities and applications with your advisors, PI's, peers, ect.

FASA is one of many resources!



DEADLINES

Let's work together



Check each fellowship's sponsor website for the most current deadlines



WHAT GOES IN TO AN APPLICATION?



APPLICATION



Most fellowship applications include:

- Personal/research statement — your goals, your story, why this fellowship
- Letters of recommendation — start building faculty relationships early
- Transcripts
- Proposed study or research plan (for some)
- Campus endorsement (required for Marshall, Rhodes, Churchill, and all international fellowships)

Even those who are not recipients are way ahead on the road to applying for graduate school — the skills and essays transfer directly.



RESOURCES





RESOURCES

The FASA office library holds winning fellowship essay examples for students to look through — a great way to understand what a strong application looks like.

- Schedule a 1:1 advising appointment — call [626-395-2150](tel:626-395-2150) or email FASAoffice@caltech.edu
- Walk-in hours vary each term, check FASA site
- Fellowship Guide 2025–26 available on the FASA website
- Essay review support (for content, not proofreading)





WHERE TO START



APPLICATION



- Visit fasa.caltech.edu/fellowships
 - Browse fellowship categories that match your field and goals
- Check the FAQ page for common questions
- Come to FASA's info sessions and Graduate STEM Panel (fall event)
- Book an advising appointment early — don't wait until October!





THANK YOU.

TAKE THE SURVEY,
PLEASE!



@FASA.CALTECH

