

# Bishop Fellowship



# Overview

Background

Eligibility

Tax Requirements

Program Requirements

Program Length & Costs

Travel

Travel Funding

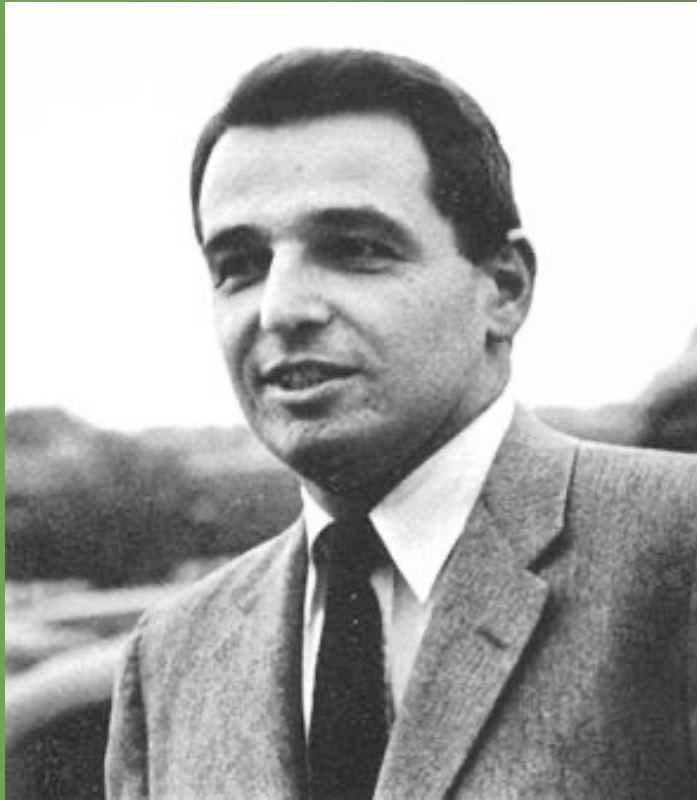
Ineligible Programs

Application Items

Application Directions

Program Examples & Resources





## Background

Dr. Bishop was an American nuclear physicist specializing in fusion physics.

The Bishop family honors the memory of Dr. Amasa Bishop who graduated from Caltech with his B.S. in physics in 1943 by establishing the Amasa Bishop Summer Study Abroad Fellowship.

Read more about Dr. Bishop [here](#).

# Eligibility

- Current Caltech Freshmen, Sophomores, Juniors enrolled all academic year.
- You are not eligible if on leave the term prior to or after your Bishop Prize. You must be enrolled for a minimum of 36 units.
- Must be 18 years of age by application deadline.
- Minimum 2.8 Cumulative GPA – some study programs require higher a GPA.
- Individuals only (no pairs)



# Tax Requirements

The Bishop has been declared a true fellowship.

The award for US citizens and permanent residents will not be reported by Caltech or subject to taxes.

However, non-residents may be subject to a 14% tax rate if there is no tax treaty between the US and their country.

Prize funds cannot be used to pay US taxes.

## **Program REquirements**

Apply for an established study program run by a university or registered private organization.

No internships or research programs.

At least 14 days on the ground—not including landing & return days—with 10 days minimum instruction of 4 hours of instruction per day.



# Program Requirements Cont'd



The proposed program must have language component unless in an English-speaking country, in which case, it must have significant cultural component.

The proposed program must provide dorm, apartment, or homestay – cannot arrange own housing.

Note that many homestays do not provide true involvement in a family because a family is receiving compensation for hosting.

## **Program Requirements**

As a reminder, the program must have at least four hours daily of academic activity

- Field programs are acceptable but must have a formal academic component (not just fieldwork).
- They should also either have a foreign language component or other educational component.
- The program must be in one country.
- Proposed program may be multi-city if in the same country and part of the same program.





## Program Length & Costs

Program length must be 2 to 10 weeks. Applicants should propose a budget not to exceed \$8,000 for all expenses (including airfare).

- The budget must include airfare, fees, housing, and associated costs. Visa, vaccines, and health insurance are not covered.
- Volunteer work arranged via the program in addition to the regular study activities allowed, but such experience cannot be clearly career-oriented and will not count as part of the required 4 hours of academic activity.

## **Travel: day-trips, weekend, & post program**

You may request funds for weekend or daytrip travel during the program. Up to five days of post-program travel may be requested in the country of study.

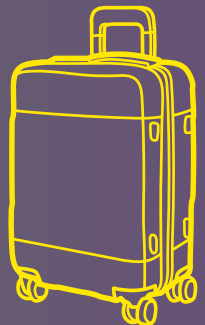
- Note these funds are granted only at the discretion of the committee and FASA, i.e., extra travel funding is not guaranteed. Such requests must be in the budget and costs must be itemized.
- You must provide a detailed itinerary of travel and budget. Funding for daytrips organized by the program should also be included in the budget.
- Independent (not program organized) weekend travel in the country must be specified & is also subject to approval.

## Travel Funding

You may not stay with friends or relatives, nor travel with them. The Bishop is intended for independent travel and not to be planned as travel with friends or relatives.

Prize winners must return to the U.S. after their prize.

- The exception is for foreign nationals who can return to their home country—however, airfare cannot exceed the roundtrip fare from their departure location in the U.S.



## Travel Funding

Note that for those visiting home abroad before retuning to the US does not include airfare back to LAX (Caltech), or other US destinations, from that country or US city.

That cost is your responsibility if you chose to travel to your home country between the Bishop program and return to Caltech.

Home return would only be covered if fare is less than or equal to return to LAX (Caltech).

# Ineligible Programs

- Semester at Sea, Princeton in Beijing, and similar programs.
- Any travel focused (non-educational) programs are ineligible for the Bishop Prize.
- The program must not require an application or deposit before the Bishop deadline and winner(s) are announced in the Spring.
- The program must not require a language exam prior to admission as a requirement of admission.

# Application Items

- Copy of program brochure/website
- Highlight your specific program details (cost, dates, length, housing options, etc.)
- Detailed budget and cost breakdown
- Health Resources & Travel Insurance Policies
- Country Synopsis
- Transcript (unofficial is acceptable)



# Application Items, cont'd



- 2 Reference forms with letters of reference
- Application Checklist form
- Application forms Part I and Part II: General applicant information & Program specific information
- Essay

Be sure all information proposed is accurate.  
If selected, you are locked into your proposed itinerary; you are not able to make any changes or requests afterwards.

# Application Items, cont'd

## Essay:

- Describe why you are interested in this program and how it aligns with the goals of Dr. Amasa Bishop.
- Describe program of study and how it will impact your academic & career goals.
- If the program has a language component, include a paragraph as to how you intend to continue language learning afterwards.





# Application Reminders

If there is no language component, then detail the cultural component.

Programs in non-English speaking countries should have a language component.

English speaking country programs need a clear cultural component that is the major part of the program.

STEM programs are allowed if the cultural component is over half of the program content.



# Application Directions



Be sure to read the direction handout carefully for additional requirements:

<https://fasa.caltech.edu/fellowships/bishop>.

All application materials must be emailed to [SAapplications@caltech.edu](mailto:SAapplications@caltech.edu) & your references to [SAreferences@caltech.edu](mailto:SAreferences@caltech.edu)

Deadline, 5pm March 1

# Program Examples & Resources

Review the FASA library for binders of winning Bishop proposals

- FASA library is in room 319 of the Center for Student Services
- Open Monday–Friday, 8am–5pm, closed from 12–1pm
- Bishop Budget workshop Feb 20, noon in Brennen Conference Room

**Suggested online resources:**

<https://iiepassport.org>, “Languages Abroad” if pursuing a language program

<http://www.languagesabroad.com>, CIEE summer programs

<https://www.ciee.org/go-abroad/college-study-abroad/programs>

Some U.S. university run summer are only open to their own students so check eligibility! Check for what groups of people the program is meant for, some are for teens!



# Questions?